

2010 Annual Report

03/15/2011

Inside this issue:

PHN Update	2
WIC	2
Home Health News	3
Environmental News	4
Financial Report	5
Vital Stats Update	6

A Year of Assessment

After the 2009-2010 H1N1 influenza pandemic and associated mass immunization campaign wound down in the spring, it took several months for the Logan County Health District (LCHD) agency and employees to recuperate from the onerous time demands and emotional drain imposed by the whole episode. Staff performed at peak for public information, investigation, and immunization, and yet the response of the public to the availability of vaccine was less than desired considering the seriousness of this disease.

Special thanks to Nursing Director Kay Schroer, who worked such long and stressful hours to carry out the program.

The agency is developing a strategic plan in order to target scarce human and financial resources for the most effective benefit to the county. A community health survey was completed in the summer of 2010. This will help guide the agency to finish the strategic plan this year. In 2008, LCHD had led a complete local public health assessment with the participation of all local public health agencies. This assessment, called the National Public Health Performance Standards Program (NPHPSP), is the basis for all local public health planning. Unfortunately, this had to be set aside in the face of the loss of the levy with its 40% reduction in tax receipts and 33% reduction in staff.

The Logan County Health District is committed to using the NPHPSP and the Community Health Survey, in conjunction with the recently released Robert Wood Johnson "County Health Rankings" and "Healthy People 2020" to complete a community health improvement plan this year. Please note that Logan County finished 61st out of 88 Ohio counties in "health outcomes" in the county rankings. This was particularly caused by a ranking of 71st of 88 in "personal health behaviors". Interestingly, one of the prime needs documented by citizens in the community health survey was a need for education on healthy behaviors. We encourage and need public participation in developing the community health improvement plan.

The employees, Leadership, and Board of Health fully realize how important it is to revive our discontinued health education program. This critical piece of our strategic plan will be accomplished through grant funding. Your county health district has a dedicated, well-trained, and knowledgeable group of employees who are ready and capable of responding to any public health crisis. We remain committed to making Logan County the safest and healthiest community in Ohio.

Boyd C. Hoddinott, MD, MPH
Health Commissioner

Public Health Nursing Update

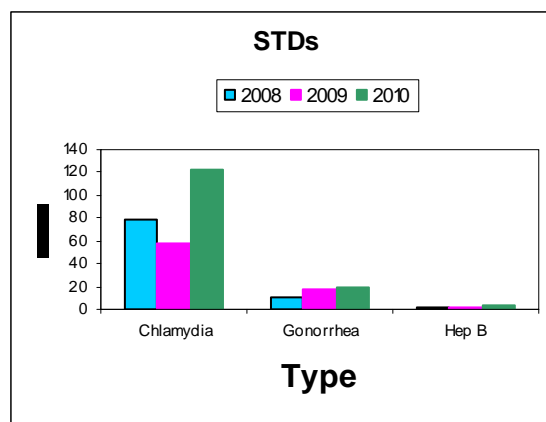
The Public Health Nursing Division, which also includes Home Health nursing and Women Infant and Children (WIC), has had a year of adjustments and settling into our regular and routine job duties. As you recall, most of 2009 and the first half of 2010 was busy with H1N1 activities. Since then, we have worked in our respective areas keeping current with ever changing rules and regulations and some staff and position changes. We are very proud of our Home Health Nursing unit as they were selected by 2010 Home Care Elite among the top 25% of all home health agencies in the country.

We continue to provide nursing services for newborn home visits, school nursing, Bureau for Children with Medical Handicaps (BCMh), lead testing, infectious disease investigations, immunizations for children and adults, flu clinics and blood pressure/blood sugar clinics.

Logan County Health District has a very caring and professional nursing staff. We strive to promote the health of our community and foster more collaborative partnerships with many other agencies. Our staff continues to remain current with on going

educational trainings in each respective area. We continue to strive to further identify the needs of our community.

We are committed to developing an informed healthy community.



Women, Infants & Children

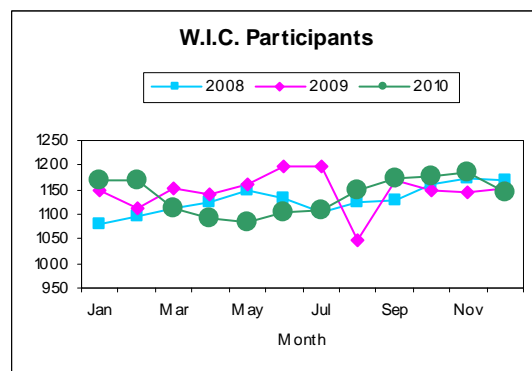
The Logan County Women, Infants, and Children (WIC) Program served approximately 1,100 participants each month during 2010. The WIC program generated approximately \$564,418.63 in 2010 by participants redeeming their WIC coupons at grocery stores in Logan County.

The main event for the U.S. Department of Agriculture's WIC program was the addition of two breastfeeding peer helpers on 11-29-10. The breastfeeding peer helpers are WIC mothers themselves who have breastfed

one child for a minimum of six months. This new segment of the WIC program is to help promote a mom to mom contact in order to help WIC moms understand the benefits of breastfeeding and to help during any difficulties or complications that may occur during breastfeeding. Renee Hartley and Paige O'Neil-Tester are doing a wonderful job getting acquainted in their new positions.

In October 2010, Kathleen Davis, who is a WIC nurse, received her Certified Lactation

Counselor (CLC) certification. Now both WIC nurses, Kathleen Davis and Tracy Davis, are CLC certified. The CLC licenses are a wonderful asset to the WIC program in order to further help our breastfeeding mothers.



Home Health Agency News

The Home Care industry has faced many changes in the past year. The complex regulatory changes we continue to face are becoming exceedingly difficult to implement. In January 2010 Oasis C was finalized. This was a major modification to the original Oasis (Outcome and Assessment Information set) tool that Home Health (HH) agencies must collect in order to participate in the Medicare program. This turned out to be more difficult than originally anticipated. The changing and conflicting guidance from CMS (Certified Medicare/Medicaid Services) slowed our processes resulting in assessments taking longer to complete and increasing work loads. The goal was to link HH payment to the use of evidence based practices and improvement of patient outcomes. Our Home Health Perspective Payment System (HHPPS) rate was also updated

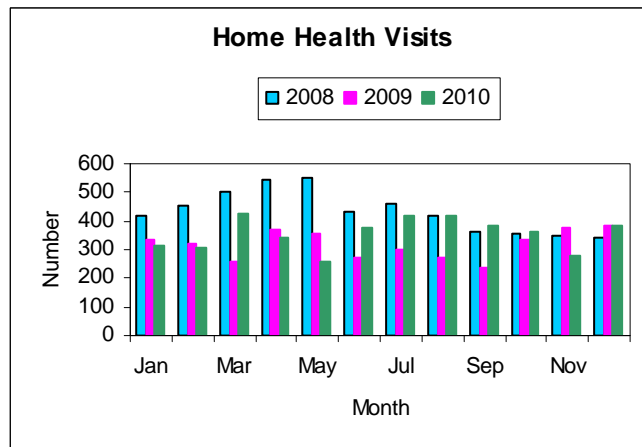
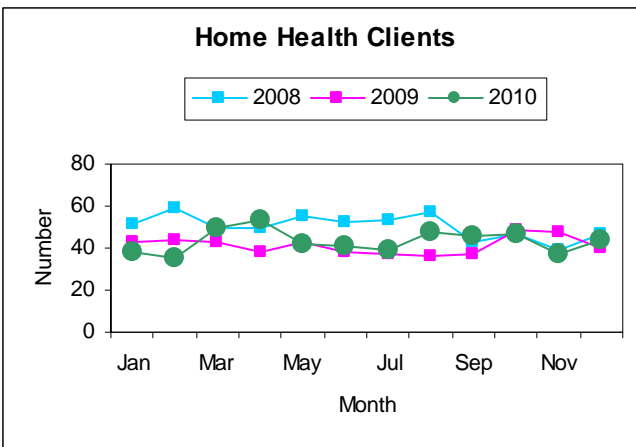
at this time.

CMS also mandated a public reporting data collection standard called HH-CAHPS (Home Health- Consumer Assessment of Health Care Providers & Systems). This standard required that HH agencies retain an independent vendor to provide these services. These surveys are sent to randomly selected clients to identify their experience of the care they received. This data is reported and available for viewing at www.medicare.gov/hhcompare. Agencies who do not comply or fail to report the data will receive a 2% point reduction in annual payment updates for 2012.

These challenges were met due to the overwhelming involvement of our team. The team consists of people who are dedicated to making our Home Care agency

a success. This would not have been possible with out their knowledge, experience and persistence. The implementation of these changes required the entire HH staff to be educated and partner together. The team simultaneously implemented these requirements and processes while recognizing the effects on billing and continuing to provide quality care.

Logan County Home Health Agency was recognized by Home Care Elite. This organization recognizes the top 25 % of home health agencies in the country. It honors the top agencies in quality outcomes, quality improvement and financial performance measures.



Environmental Health News

Bed Bugs: Cases of bed bug infestation are increasing across the US and Logan County is no exception. Infestations are not related to unsanitary living conditions. Bed bugs do not fly or jump. They have no wings and are about ¼ inch in length with a flattened oval shape and rusty brown color. They feed on blood, but they can live for up to 18 months without eating a blood meal. More information about bed bugs can be found at our website or by calling an environmental health sanitarian.

Landfills: We continue monitoring ground water at the closed Chiles Landfill. We had to cut back on analysis of data during 2010, but in 2012 we should be able to increase our activities thanks to increased funding from the solid waste management district.

Cherokee Run Landfill continues to operate within the law and at least monthly comprehensive inspections are performed.

Closed Lake Refuse Landfill is inspected at least annually. We continue to pursue funding to initiate a groundwater monitoring program there.

Closed Bellefontaine Construction and Demolition Landfill has not yet obtained final closure certification. The certification should be completed after final spring seeding of proper vegetation. Due to a strange regulation that requires closed construction and demolition landfills to remove their groundwater monitoring wells, we will be pursuing funding for installation of a groundwater monitoring program at this landfill as well.

Food worker training: As of March 1, 2010 all new food service operations must have at least one person with a food safety certification working whenever the business is operating. In addition, existing operations that have a repeat critical violation; existing operations that have a confirmed illness outbreak; and existing operations that have a change of ownership all must obtain the certification.

Nuisance abatement:

Ohio Revised Code 3707.01 is the basic law that enables Boards of Health to order the abatement of nuisances. In order to declare a situation a public health nuisance the Board must be able to prove that it is "dangerous to life or health".

Many times properties only appear to be dangerous to life or health when they aren't aesthetically

pleasing. There are other avenues that local jurisdictions can take to address these properties. The main way would be for a village or township to adopt a property maintenance code.

Boards of Health may also adopt property maintenance codes, but locally these attempts have been defeated.

Ohio Revised Code 3707.02 also allows Boards of Health to abate nuisances using their own funds and to place the cost as a lien on the property. This presents a philosophical question about when to use tax payer money, for example, to remove a dangerous building when recovery of the money spent is unlikely.

2010 Inspections	
Sewage Inspections	215
Private Water System Inspections	195
Water Samples	357
Solid Waste Landfill Inspections	18
Demolition Landfill Inspections	4
MH Park Inspections	76
RV Park & Camp Inspections	103
Resident Camp Inspections	12
Pool Inspections	158
Animal Bites Reported/Investigated	94
Nuisance Investigations	240
Nuisance Inspections	291
Food Safety Inspections	871
2010 Licenses, Permits & Registrations	
Regular Food Service Licenses	275
Mobile Food Service Licenses	87
Vending Machine Licenses	66
Temporary Food Service Licenses	90
Solid Waste Landfill License	1
Demolition Landfill License	0
Public Pool Licenses	28
RV Park/Camp Licenses	40
Manufactured Home Park Licenses	24
Sewage Permits	52
Private Water System Permits	86
Resident Camp Registrations	8

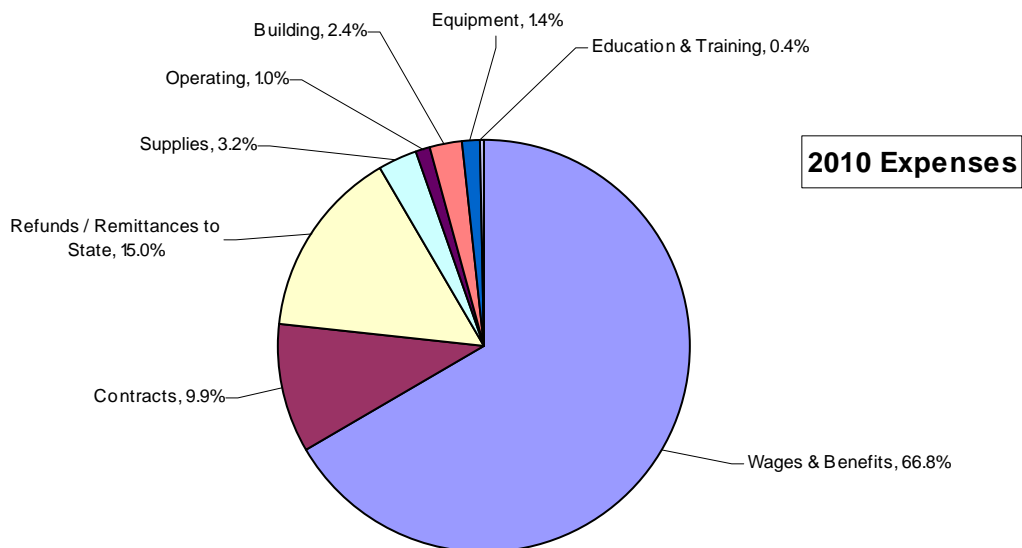
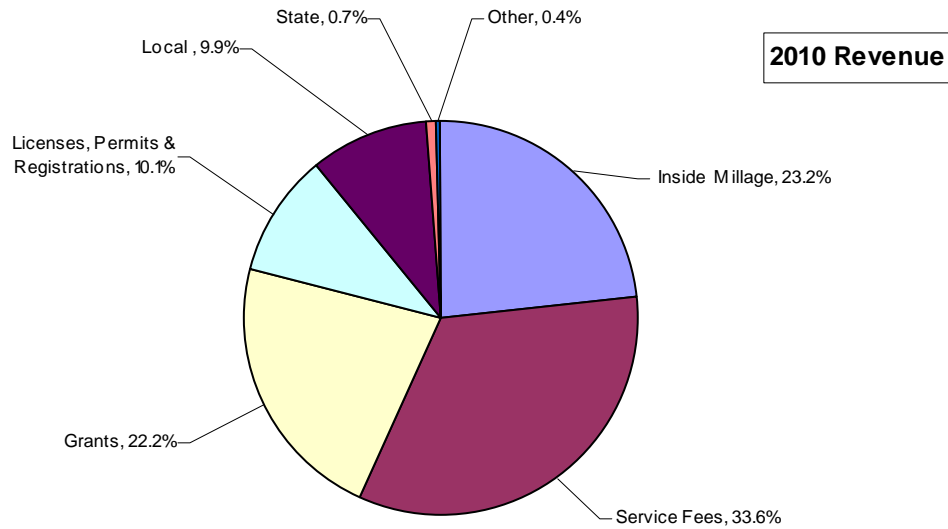
Financial Report

Revenue

Category	Actual
Inside Millage	500,000
Service Fees	723,714
Grants	478,327
Licenses, Permits & Registrations	218,677
Local	212,363
State	14,389
Other	7,715
Total	2,155,185

Expense

Category	Actual
Wages & Benefits	1,447,581
Contracts	214,003
Refunds / Remittances to State	324,019
Supplies	68,925
Operating	22,731
Building	51,449
Equipment	30,311
Education & Training	8,194
Total	2,167,213



Logan County Health District

310 South Main Street
 Bellefontaine, OH 43311

Phone: 937-592-9040

Fax: 937-592-6746

E-mail: logacohd@loganhealth.org

Boyd C. Hoddinott, MD MPH
 Health Commissioner

Don Spath, President
 Logan County Board of Health



Public Health
 Prevent. Promote. Protect.



Vital Statistics Update

Following training of vital statistics personnel in 2010, the Logan County Health District was given access to the new statewide birth record database. In an enhancement to customer service, individuals born anywhere in the State of Ohio may now locally obtain a *Birth Abstract* which provides the same legal documentation as a certified birth certificate copy.

Vital Records Report	
Birth Certificates Issued	2,080
Births Recorded	425
Hospital Births	414
Home Births	13
Females	188
Males	237
Sets of Twins	2
<hr/>	
Death Certificates Issued	1,577
Deaths Recorded	381
Females	191
Males	190
Age 100+	2
Oldest	106
Youngest	2 hrs

LOGAN COUNTY'S LEADING CAUSES OF DEATH (2010)

